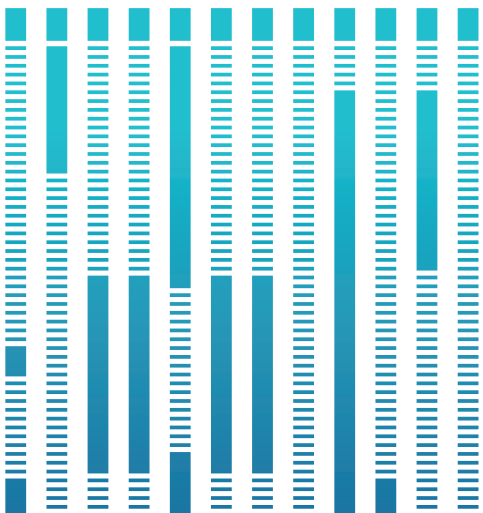
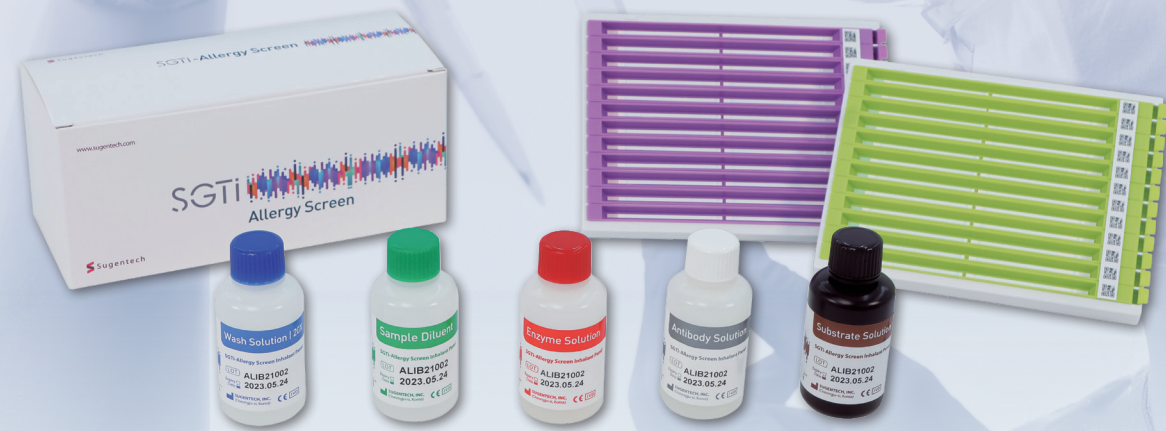


# SGTi

## Allergy Screen





# SGTi Allergy Screen

The SGTi-Allergy Screen is a multi-parameter line immunoblot for allergy diagnosis by detecting allergen (food/inhalant) specific IgE in human serum or plasma.

- **Key feature**
- **Small sample volume**
  - 50ul of serum or plasma
  - Beneficial for pediatric patients
- **More than 100 allergens specific IgE testing**
  - Inhalant 50 allergens
  - Food 53 allergens
- **Lot calibration by QR code**
  - Managing the lot variation
- **Enhanced usability**
  - One touch strip tray & User friendly software

▪ **Product specifications**

<b>Principal</b>	Multiple Allergen Simultaneous Test (Line Immuno-assay)
<b>Type of Panel</b>	Inhalant / Food
<b>Sample Volume</b>	50ul per Strip
<b>Sample Type</b>	Serum or Plasma (Li-Heparin, Na-Citrate)
<b>Test Time</b>	About 3-4 hours (Depends on test amount and device)
<b>Storage</b>	2° – 8°C / 36° – 46°F
<b>Period of Validity</b>	24 months
<b>Test/Kit</b>	24 tests/1 kit
<b>Control</b>	Positive control(D.p, D.f, Shrimp, Crab)
<b>Kit Components</b>	<ul style="list-style-type: none"> <li>· Test Strip</li> <li>· 5 kinds of Test Solution (Sample Diluent, Antibody, Enzyme, Substrate, Washing)</li> </ul>
<b>Automation</b>	S-Blot 2, S-Blot 2 Easy, S-Blot 3

## PANEL INFO

### INHALANT Panel

<b>Grass</b>	Bermuda grass Orchard grass Sweet vernal grass	Timothy grass Redtop, Bent grass Rye
<b>Tree</b>	Acacia Alder Ash Birch Cottonwood Cypress Goat willow	Hazel Japanese cedar Oak White Olive Pine Sycamore
<b>Weed</b>	Common Ragweed Dandelion English Plantain Goldenrod Japanese hop	Mugwort Oxeye daisy Pigweed Russian thistle

<b>Epidermal &amp; Animal Proteins</b>	Cat Dog Guinea pig Hamster	Horse Mouse Rabbit
<b>Mites &amp; Dust</b>	Dermatophagoides pteronyssinus(D.p) Dermatophagoides farinae(D.f)	Acarus siro Storage mite (T.p) House dust
<b>Mold/ Fungi</b>	Alternaria alternate Aspergillus fumigatus Candida albicans	Cladosporium herbarum Penicillium notatum
<b>Insect</b>	Cockroach Honey bee	Yellow jacket(wasp)
<b>Others</b>	Latex Positive Control	Total IgE

### FOOD Panel

<b>Seeds &amp; Nuts &amp; Legumes</b>	Almond Cacao Hazelnut Peanut	Pine nut Soy bean Sunflower seed Walnut
<b>Grains</b>	Barley Maize Rice	Wheat Buckwheat Sesame
<b>Vegetables</b>	Carrot Celery Cucumber Garlic	Onion Potato Tomato
<b>Fruits</b>	Apple Banana Kiwi Mango	Orange Peach Strawberry

<b>Meat</b>	Beef Chicken	Lamb Pork
<b>Seafood</b>	Clam Crab Lobster	Oyster Scallop Shrimp
<b>Dairy</b>	Cheddar cheese	Egg white Milk
<b>ETC</b>	CCD Positive Control	Total IgE Yeast, baker

Sugentech offers flexible and varied allergy testing solutions to meet the user's specific needs.



**Semi-Automated Immunoblot System**

## S-Blot 2

- **Key feature**
- **Accurate** – Uses an intelligent algorithm for accurate analysis.
- **Easy to use** – Semi-automated immunoblot system with user-friendly software and LIS.
- **Reliable** – Over 1,000 units sold domestically and overseas, with proven safety.



**Semi-Automated Immunoblot System**

## S-Blot 2 Easy

- **Key feature**
- **All-inclusive** – Full-featured, the smallest semi-automated system on the market.
- **Affordable** – Reasonable price, making it accessible to a wider range of users.



**One-Step Fully-Automated Immunoblot System**

## S-Blot 3

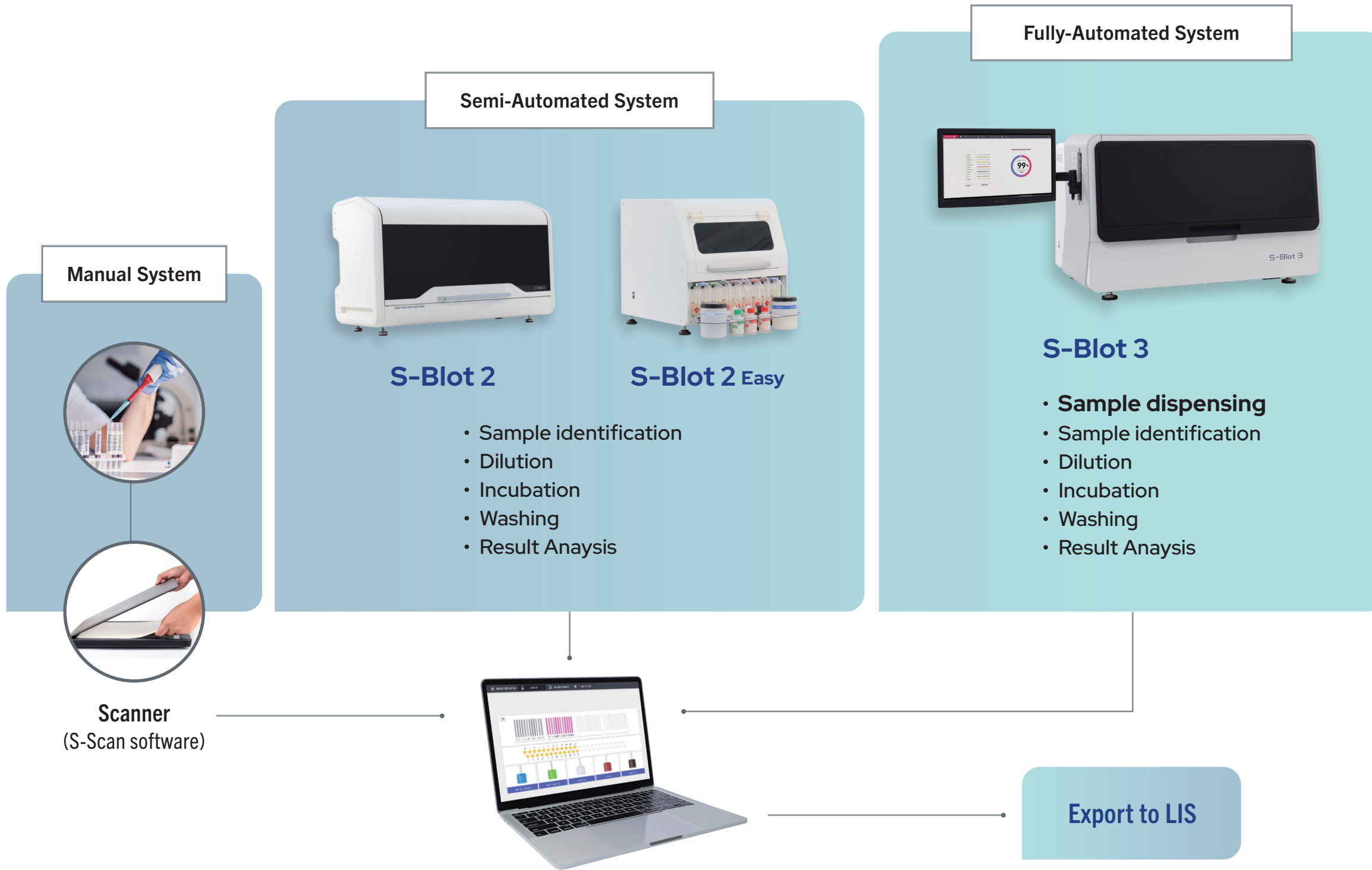
- **Key feature**
- **Smart** – Uses improved LLD (Liquid Level Detection) technology for accurate analysis.
- **Simple** – Fully-automated immunoblot system with user-friendly software and LIS for easy operation.
- **Specialized** – Optimized for use in large hospital environments.

▪ **Product specifications**

	S-Blot 2	S-Blot 2 Easy	S-Blot 3
<b>System Description</b>	Semi-automated process	Semi-automated process	Fully-automated process
<b>Throughput</b>	48	12	48
<b>Incubation</b>	Tray Rocking / 7.5° +/- 0.5 / 20 RPM		
<b>Drying Method</b>	Heater with Blower fan		
<b>Power (Supply, Main fuses, Consumption)</b>	AC 100-240V 50/60Hz, 300VA	AC 100-240V 50/60Hz, 300VA	AC 100-240V 50/60Hz, 800VA
<b>Test Time</b>	~ 3 Hours	~ 3 Hours	4 Hours
<b>Operating System</b>	Window 10 64bit or more, at least 4 GB, at least 250 GB Hard disk		
<b>Dimensions(L x W x H mm)</b>	886 x 540 x 560	450 x 400 x 400	870 x 540 x 565
<b>Weight(kg)</b>	70	22	80

# SGTi-Allergy Screen Flow Chart

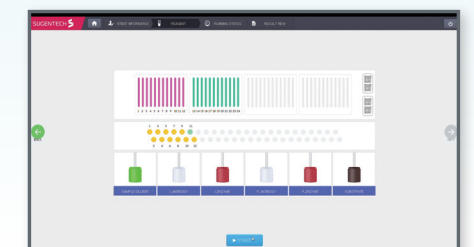
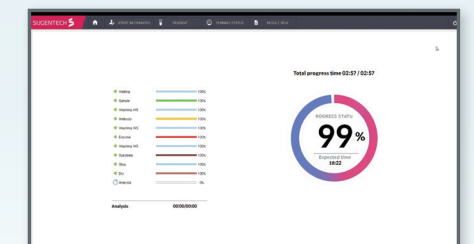
The SGTi-Allergy screen provides a variety of processing options including semi-automated and fully-automated devices. Both devices offer bidirectional communication with the SGTi-Allergy Screen software or Laboratory Information System (LIS), to enable data import and export.



## Test Report

The S-Scan software enables complete automation in evaluating SGTi-Allergy Screen strips, as well as managing and electronically archiving individual data.

The screenshot shows a detailed test report with columns for patient information, test results, and a bar chart visualization of the data.



## SUGENTECH

Global In-vitro diagnostic  
Total platform leader



### Contact Us

#### Head office / R&D Center

Sejong Campus PIUM, 75,  
Jiphyeondong-ro, Sejong-si,  
Republic of Korea

#### Manufacturing Site

721-26, Jeongjungyeonje-ro,  
Osong-eup, Heungdeok-gu,  
Cheongju-si, Chungcheongbuk-do,  
Republic of Korea

#### Sales Office

5F, 12, Yeongdong-daero 96-gil,  
Gangnam-gu, Seoul,  
Republic of Korea

Asia Pacific: +82-44-850-9761

Other Regions: +82-2-2014-5621

sales@sugentech.com

**WWW.SUGENTECH.COM**

## Lab Test

Multiplex Immunoblot Assay



## POC Test

Point-Of-Care Test  
for Multiplex Parameters



## Digital Healthcare

Mobile Integrated  
Personal Healthcare

